

# BESTECH DISPLAY PLATFORMS

Curved Monitors | Closed Frame Monitors | Open frame Monitors  
Button Deck Monitors | Stretched Monitors | Square Monitors  
Miscellaneous Monitors | Outdoor Monitors



**BESTECH**

**BESTECH Corporation**

Published in Jan. 2026

# Greetings from the CEO

**Dear all valuable customers,**

**Most of all, let me express my sincere gratitude for concern and care to us.**

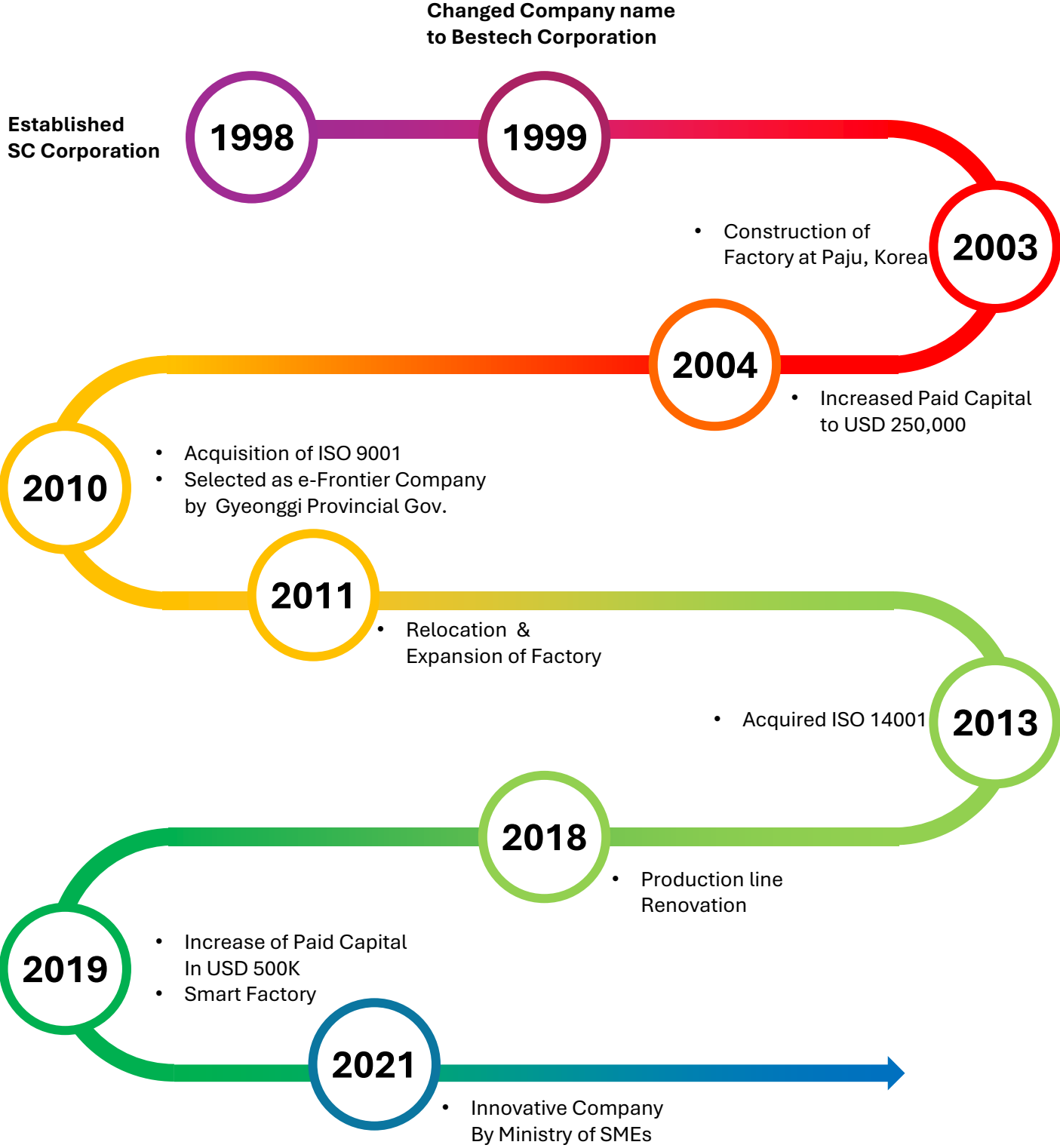
The innovative digital technology in gaming monitors and industrial display brought us enormous challenges since Bestech was established in 1998. We have won threats and competitions like surging waves which hardened our passion toward to be a leader of gaming monitors and industrial display. The outstanding quality and performance surpassing customer's expectation allowed us to hold unbeatable strength in gaming monitors when we kicked off into manufacturing of gaming monitors. The endless efforts on technology enhancement have been invested to lead the market with resolution to serve customer's need by the "Best Technology" products. As the turnaround time for industrial display comes to be shorter, our job skill with agility and flexibility enable us to satisfy customer's needs with short lead time and diverse specifications. In addition, full line up in terms of all monitor size and firm management of software on own A/D board won't disappoint any customers looking for the state of art display solutions. Our devotion to product development with the "Best Technology" like our company name of Bestech will grow benefits of customers all around world.

Yours sincerely,

Stanley Kim / CEO

Bestech Corporation

# Company History



# Curved Monitors

- State of the art 1500R with chemical slimming of open cell ( 0.15mm ) for “No Mura”
- Perfect Even Radius of Curvature.
- Top quality powder coating for luxurious appearance.
- Wide Selection of the Acrylic Bezels for LED diffusion or diffusion printing on cover lens.
- Programmable LED Lighting with Halo effect
- In house LED controller with USB/Serial Interface
- LED strip with 1 LED/ IC
- UL/FCC/CE Approved



Items	43" J/P	43" C	49" J/P	55" J/P	Units
Bending Radius	1500	1500	1500	1500	R
Number of Pixels	3840 x 2160	3840 x 2160	3840 x 2160	3840 x 2160	
Brightness	600 Max.	600 Max.	600 typical	600 Max.	cd/m <sup>2</sup>
Viewing Angles (RL/UD)	178/178	178/178	178/178	178/178	degrees
Curved Type	J and P type	C type	J and P type	J and P type	
Video Inputs	DP, HDMI, DVI-D, D-SUB				
Color Gamut	NTSC 94%				%
Color Uniformity	80				%
Touch Screen	10 Points P cap.				
LED decoration	Different types of Acrylic Bezel on 4 perimeters and Halo Effect				
Options	Acrylic Bezels				

# Closed Frame Monitors w/ LED Deco

- Optimized Design of Closed Frame with Bezel for Mounting on Spine or Protruding Structure.
  - Top quality powder coating for luxurious appearance.
  - Wide Selection of the Acrylic Bezels for LED diffusion or diffusion printing on cover lens.
  - Programmable LED Lighting with Halo effect , Pixel Control Controller for Fascinating Light Effects and Sequence of Jack Pot, Cascade, etc.
  - 3M Driver Compatible via Serial Interface PCAP and IR Touch Screens.
  - Diverse LED strips with simple RGB, 3 LEDs + 1 IC and I LED + 1 IC
- UL/FCC/CE Approved

Items	FHD						UHD			Units
	21.5"	23"	23.8"	27"	32"	43"	32"	43"	49"	
Aspect Ratio	16:9	16:9	16:9	16:9	16:9	16:9	16:9	16:9	16:9	
Number of Pixels	1920 x 1080						3840 x 2160			
Brightness	250	250	250	300	400	400, 700	400	500, 700	500,700	cd/m <sup>2</sup>
Viewing Angles (RL/UD )	178/178						178/178			degrees
Video Inputs	D-SUB, DVI-D, DP, HDMI									
Options	RS232, Audio Out, Protection Glass (3mm or 5mm), USB									



# Open Frame Monitors

- Diverse Size Ranging 15" ~ 98" with Perfect Functional Touch Screen Options.
  - Various Touch Screen like PCAP, SCAP, SAW, Resistive and IR Touch Screens Ready.
  - 3M Driver Compatible via Serial Interface for PCAP and IR Touch Screens.
  - Mechanical Design Customizable to fit into Game Machine or Special Applications.
- Strong Support on Firmware Customization of EDID and Video Signals.
- EGA/CGA Supportive
  - UL/FCC/CE Approved



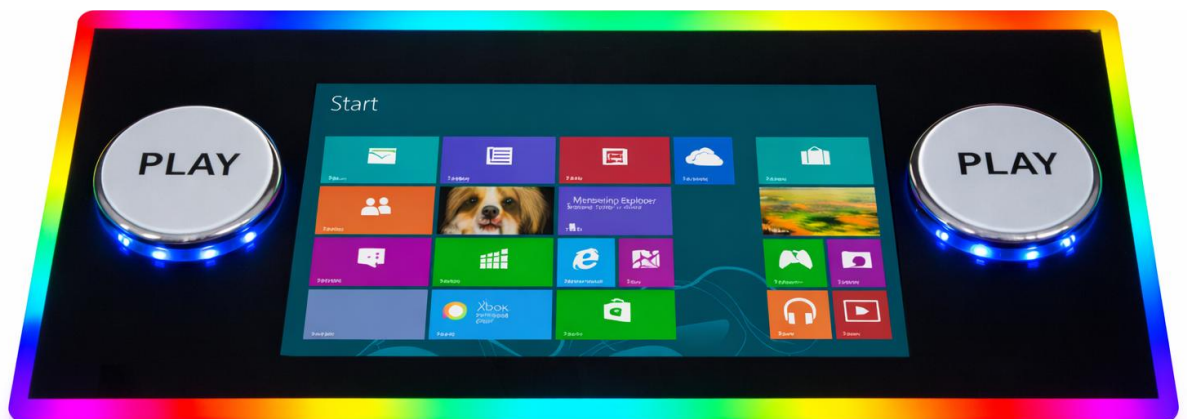
Items	XGA	SXGA		FHD					Units
	15"	17"	19"	21.5"	23"	23.8"	27"	32"	
Aspect Ratio	4:3	5:4	5:4	16:9	16:9	16:9	16:9	16:9	
Number of Pixels	1024 X 768	1280 x 1024		1920 x 1080					
Brightness	250	250	250	250	250	250	250/300	400, 450	Cd/m2
Viewing Angles (RL/UD)	160/140	170/160	178/178	178/178					degree
Video Inputs	D-SUB, DVI-D, DP, HDMI								
Options	RS232, Audio Out, Protection Glass (3mm or 5mm), USB								
Touch Screen	SCAP, PACP, SAW, Resistive, IR								

Items	FHD			UHD					Units
	42"	43"	55"	43"	65"	75"	86"	98"	
Aspect Ratio	16:9	16:9	16:9	16:9	16:9	16:9	16:9	16:9	
Number of Pixels	1920 x 1080			3840 x 2160					
Brightness	450~700	450~700	450	450~700	500	350 ~ 650	350 ~ 500	500	Cd/m2
Viewing Angles (RL/UD)	178/178			178/178					degree
Video Inputs	D-SUB, DVI-D, DP, HDMI								
Options	RS232, Audio Out, Protection Glass (3mm or 5mm), USB								
Touch Screen	SCAP, PACP, SAW, Resistive, IR								

# Button Deck Monitors

- Interactive and Fascinating Substitute for Mechanical Buttons
- 10 Point Multi-touch PCAP with Customized Glass Design for Game Machines
- Water Proof Treatment Surface

Item	10.1"	12.1"	13.3"	15.6"	Resized	Units
Cut/Aspect Ratio	16:10	16:10	16:9	16:9	19" Cut by required sizes (19"/21.5"/23.8"/27" and 32" etc1/4 )	
Panel Outline Dimension	216.96 x 135.9	261.12 x 163.2	293.47 x 165.08	344.16 x 193.59		H(mm) x V(mm)
No. of Pixels	1280 x 800	1280 x 800	1920 x 1080	1920 x 1080		
Brightness	400	400	400	500		Cd/m2
Viewing Angle	170/170	178/178	178/178	178/178		Degree
Touch Screen	10 Point PCAP					
Video Inputs	D-SUB, DVI-D, DP, HDMI					





# Stretched Monitors

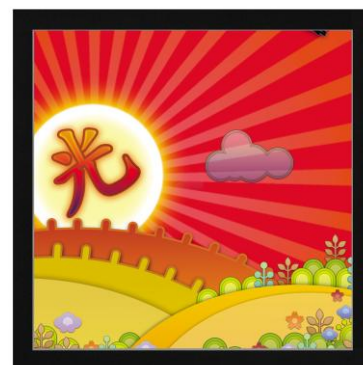
- Application for Reel-Video Combination, Button Deck & Jack-Pot Sign Board
- Variety Installation Options from Retail Environment, Stadium to QSR
- Size Customizable upon Customer's Demand

Item	28"	28.6"	29.4"	36.6"	37"	Units
Cut/Aspect Ratio	16 : 3	32" 1/2, 32:9	16: 6	25:7	32: 9	
Panel Outline Dimension	698.4 x 130.95	698.4 x 196.4	698.4 x 291.9	919.3 x 138.85	904.32 x 254.34	H(mm) x V(mm)
No. of Pixels	1920 x 360	1920 x 540	1920 x 720	1920 x 290	1920 x 540	
Brightness	700, 1500	700, 1500	700	700	700, 1500, 2500	Cd/m2
Viewing Angle	178/178					Degree
Touch Screen	10 Point PCAP					
Video Inputs	D-SUB, DVI-D, DP, HDMI					
Orientation	Landscape / Portrait					

Item	42"	48.5"	49.5"	56.6"	58.4"	Units
Cut/Aspect Ratio	47" 4/9 Cut	46" 1/3	46" 1/3	65" 1/5	65" 1/2	
Panel Outline Dimension	1039.68 x 259.9 2	1209.6 x 226.8	1209.6 x 340.2	1428.48 x 159.9 6	1428.48 x 401.7 6	H(mm) x V(mm)
No. of Pixels	1920 x 480	1920 x 360	1920 x 540	3840 x 430	3840 x 1080	
Brightness	700, 1500,2500	700	700, 1500,2500	700	700	Cd/m2
Viewing Angle	178/178					Degree
Touch Screen	10 Point PCAP					
Video Inputs	D-SUB, DVI-D, DP, HDMI					
Orientation	Landscape / Portrait					



# Square Monitors



- 1:1 Aspect Ratio Square Monitor for Gaming, Point of Sale and Advertising
- 10 Point Multi-touch PCAP with Customized Glass Design

Items	28.1"	35.3"	39.8"	44.9"	Units
Active Area	504 x 504	618.2 x 682.4	714.2 x 714.2	806.4 x 806.4	mm
Number of Pixels	800 x 800	1600 x 1800	1920 x 1920	1280 x 1280	
Brightness	700, 1500	700, 1500	700	700	Cd/m2
Viewing Angle	178/178				Degree
Touch Screen	10 Point PCAP				
Video Inputs	D-SUB, DVI-D, DP, HDMI				

# Miscellaneous Monitors



- 6.2" Player's Tracking Monitor & Round Monitor
- Toppers with USB Playback Compatible to Tower Light
- Double sided Monitor for Roulette Display Boards
- CGA, EGA support

Items	6.2"	23.6" Round	USB playback	Double Sided	Units
Active Area		600.38 x 600.38			mm
Number of Pixels	640 x 240	848 x 848			
Brightness	400	700			Cd/m2
Viewing Angle	160/160	178/178	178/178	178/178	Degree
Touch Screen	10 Point PCAP				
Video Inputs	HDMI	DVI-D, D-SUB, DP, HDMI	D-SUB, HDMI, USB x 2		

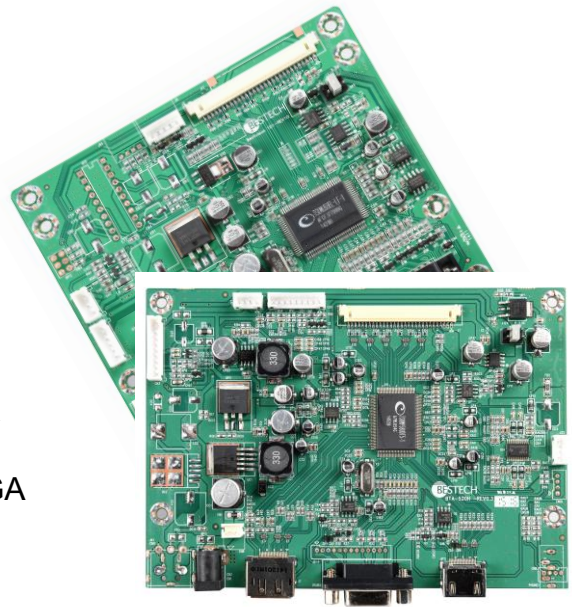
# High Brightness Outdoor Monitors

- Sunlight readable monitors with 1500 ~ 2500 Nits brightness
- Touch optical bonding to enhance visibility
- Automatic Brightness Control by Photo-Cell ( Light Sensor)

Items	21.5"	32"	43"	46"	55"	65"	Units
Number of Pixels	1920 x 1080						
Brightness	1,500	1500, 2500	1500, 2500	1500, 2500	2500	2500	Cd/m2
Viewing Angle	178/178						Degree
Touch Screen	10 Point PCAP						
Video Inputs	D-SUB, DVI-D, DP, HDMI						
Options	Luminance Sensor, water proof and dust proof in the front						



# AD Boards



- Full line-up up to UHD
- Supportive all panel in 3.3V, 5V, 12V and 24V
- Various inputs : HDMI, DP, DVI, Dual DVI, VGA
- CGA/EGA Interface Board
- UL Approved

Models	Resolution	Interface	Dimension (mm)	Input Voltage	Input Ports	Applications	Remarks
BTA-210	up to 1920 x 1080	LVDS	110 x 100	12V	DVI-D, D-SUB	Amusement , Gaming, Industrial	PC Stereo In, 2W Speaker Out , 12V/5V/3.3V CGA/EGA support
BTA-530D	up to 1920 x 1080	LVDS	120 x 80	12V ~ 24V	DVI-D ,DP	Gaming, Industrial	
BTA-540	up to 1920 x 1080	LVDS	130 x 80	12V ~ 24V	DVI-D , D-SUB DP,	Gaming, Industrial	
BTA-560	up to 1920 x 1080	LVDS	150 x 80	12V ~ 24V	DVI-D, D-SUB DP, HDMI	Gaming, Industrial	10W Speaker Out
BTA-560A	up to 1920 x 1080	LVDS	150 x 80	12V ~ 24V	DVI-D, D-SUB, DP, HDMI	Gaming, Industrial	10W Speaker Out
BTA-620	up to 1920 x 1080	LVDS	120 x 80	12V~ 24V	DVI-D, D-SUB, HDMI,	Gaming, Industrial	CGA/EGA support
BTA-700	up to 1920 x 1080	4-lane e-DP	120 x 80	12V~ 24V	D-SUB, HDMI	Gaming, Industrial	
BTA-B10	1280 x 242	LVDS	100 x 60	12V	DP	Gaming, Industrial	
BTA-B20	640 x 240	R,G,B	100 x 50	5V (USB input)	DP	Gaming, Industrial	Touch control
BTA-4200	up to 3840 x 2160	V by One/ 2 port LVDS	160 x 110	12V~ 24V	D-SUB, Dual DVI, DP,HDMI	UHD	IR, 10W Speaker Out
BTA-4200A	up to 3840 x 2160	V by One/ 8-lane e-DP / 2 port LVDS	160 x 110	12V~ 24V	D-SUB, DVI , DP,HDMI	UHD	IR, 10W Speaker Out
CGA/EGA Interface						Amusement	

# LED Controller

- Compact and easy installation
- In-house design LED Controllers with firmware customization available
- Up to 300 LED Chips (LEDs) in 1 Line and Max. 360 LED Chips for 3 Lines
- Multi-connections up to 3 monitors with LED Lighting
- Dual Vcc output of 5V and 12V
- Compatible with WS2811, WS2812, WS2813, WS2815, TM1804, LPD8806, APA102
- Speed and LED type selectable by Key or Firmware
- Direct UART command by USB/Serial Cable



# Touch Screen

- ITO PCAP (GG / GFF) & IM (Index Matched) ITO Sensors
- Low sheet resistance : 60ohm/square(GFF), 75ohm/square(GG)
- Ultra Clear Cover Glass with 89%> light transmittance
- Protocol Customization Available
- 3M Driver Compatible via Serial Interface PCAP and IR Touch Screens
- Reinforcement of circuit design for top level performance on ESD and EMC immunity
- Advanced Functional Quality on Water / Palm / Object Rejection



**GAMING MONITORS  
AND DISPLAYS  
BEYOND  
BEST OF THE BEST**

**BESTECH**

[www.bestvision.co.kr](http://www.bestvision.co.kr)

# **BESTECH**

## **BESTECH Corporation**

Address 446-8, Saeori-ro, Tanhyun-myun, Paju-shi, Kyunggi-do, 10858, Korea

Tel +82-31-942-0494

Fax +82-31-942-0497

E-mail [bestech@bestvision.co.kr](mailto:bestech@bestvision.co.kr)

Homepage <http://www.bestvision.co.kr>